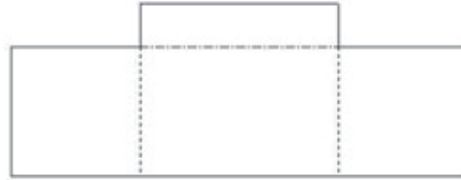


Splashbacks - Limitations

Cutting & Shape Limitations:

Two or three way split maybe required with silicon butt joints denoted by broken line. A 3mm space is required around perimeter of glass and any silicone butt joints. To ensure no joints then $B = \frac{1}{2} A$ max.



All center power point notches require a minimum of 100mm from any glass edge.



All corner and side notches will require a minimum internal radius corner of 6mm. (Limited to notch size up to 100mm x 100mm) All corner and side notches larger than the above will require a minimum of 15mm internal radius corner. Glass must be a min 50mm from all Gas Hobs. $B = \frac{1}{4} A$ max plus 100mm rule applies.

