

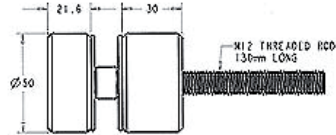
Balustrades - Hardware



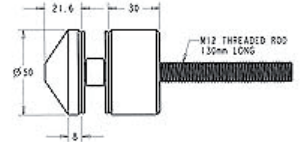
Pin Fix :



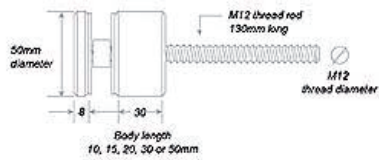
BF1000



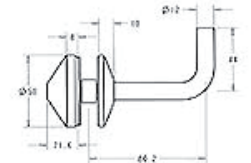
BF1100



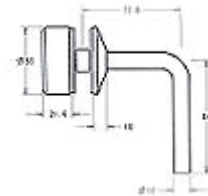
BF1150



BF1300

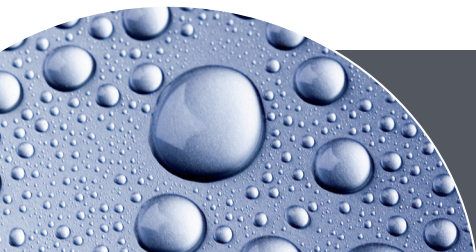
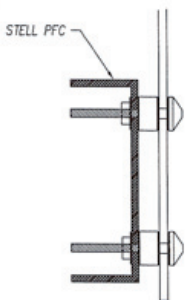


BF1200



BF1300L

Pin Fix Method:



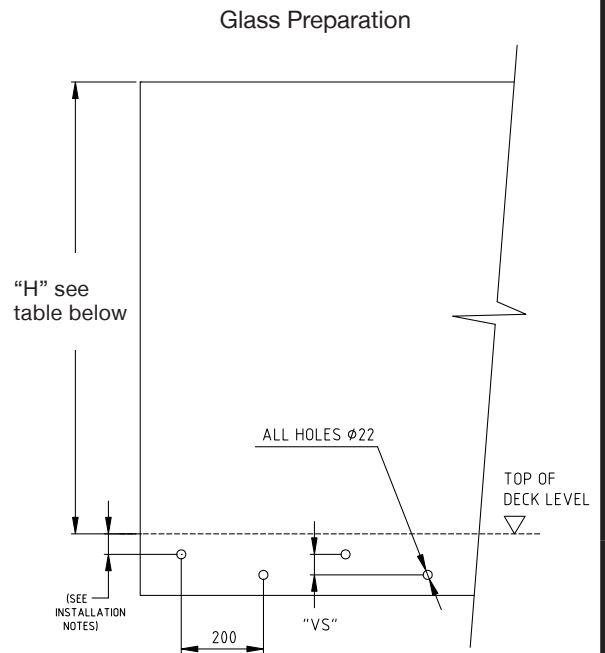
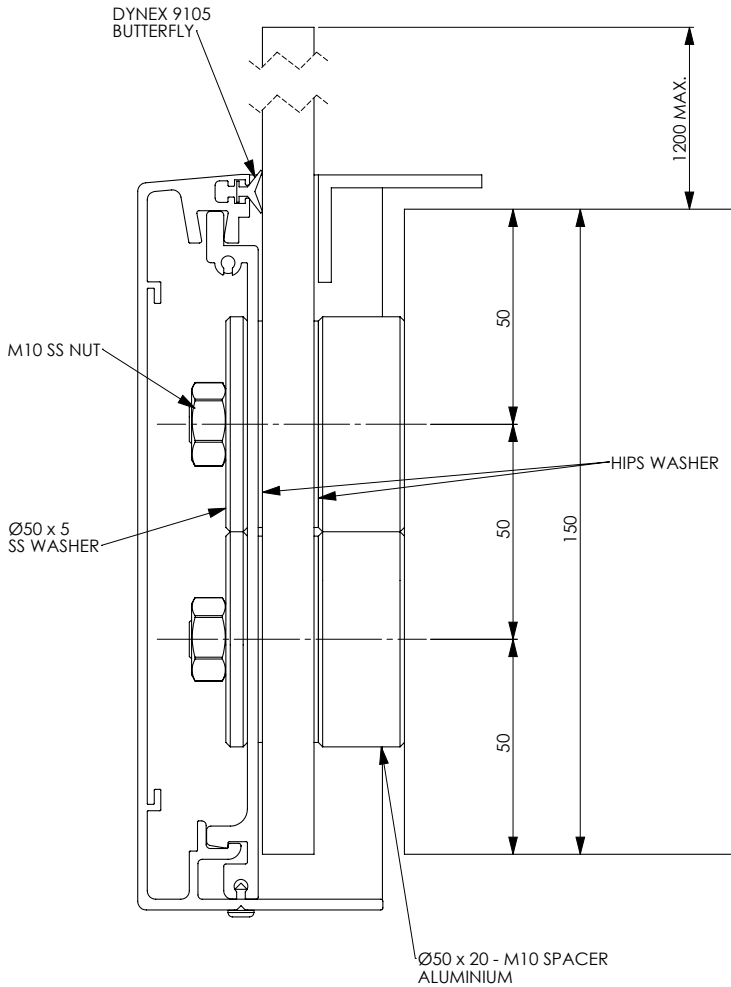
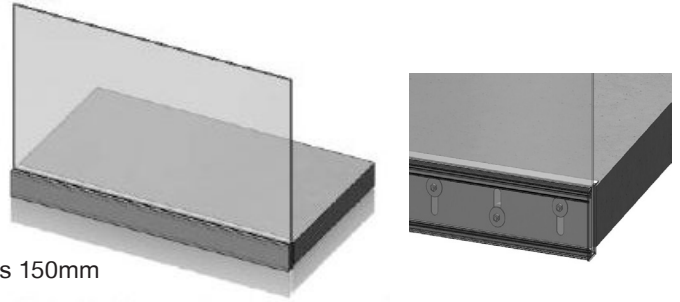
EUROGLASS FACE FIX BALUSTRADE

AVAILABLE FINISHES

- Mill, stocked
- Anodised, as required
- Powdercoated, as required

TECHNICAL DETAILS

12mm glass certified for panels up to 1100mm height
 15mm glass certified for panels above 1100mm height
 Able to be fixed to steel, timber or concrete slabs as thin as 150mm
 5M stock length
 Contact us for specific fixing details



NOTE:
ALL HOLE EDGE DISTANCES ETC. MUST BE AS PER GLASS MANUFACTURERS GUIDELINES.

Fixing Substrate	Concrete		Timber				Steel	
	M10 bolts epoxy		M12 bolts & 50mm washers		M12 lag screw		M10 bolts	
	VS	GT	VS	GT	VS	GT	VS	GT
"H" Balustrade Height above deck	1000	50mm + 12mm	50mm + 12mm	12mm	70mm	12mm	50mm + 12mm	12mm
	1100	60mm + 12mm	60mm + 12mm	12mm	70mm	12mm	60mm + 12mm	12mm
	1200	60mm + 15mm	60mm + 15mm	15mm	70mm	15mm	60mm + 15mm	15mm

Notes: - VS = vertical spacing of fixing bolts through backing plate
 - GT = glass thickness

EDC Eurochannel Dry fix channel

AVAILABLE FINISHES

- Mill finish
- Silver pearl powdercoat
- Selected powdercoat

TECHNICAL DETAILS

Suitable for 12 and 15mm glass

Vertical adjustment up to 15mm

Out of wind adjustment of +/- 3°

+/- 50mm @ 1000mm high

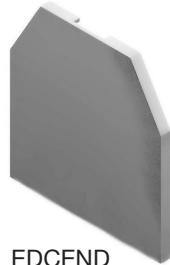
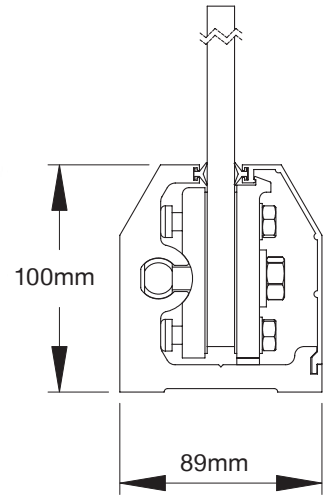
+/- 60mm @ 1200mm high

M10 threaded stud to be drilled min 90mm into concrete when using chemset (follow manufacturer's instructions)

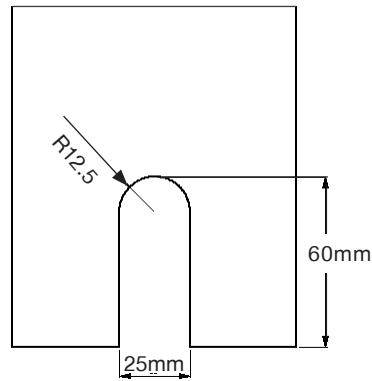
EDC kits should be spaced up to 400mm apart

Base & coverplate available in silver pearl or mill finish

Supporting base channel is anotec powder-coated with a 10yr warranty



EDCEND
End Cap



BACH Balustrade channel

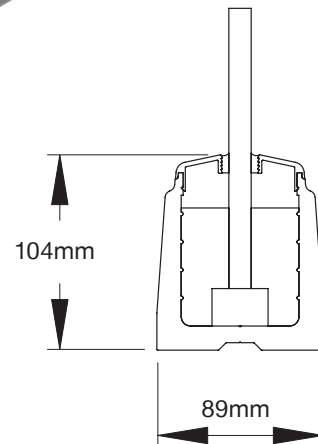
AVAILABLE FINISHES

- Mill finish
- Silver pearl powder coat
- Selected powdercoat

TECHNICAL DETAILS

Suitable for 12 and 15mm glass

Accessories available : Coach screws / Anchors / Grout
Handrail options available



BAEC
Balustrade Chanel
End Cap

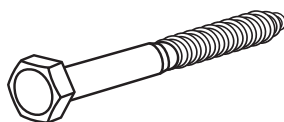
AFTEK/NSG Non shrink grout

AVAILABLE WEIGHT

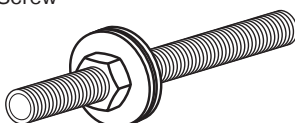
- AFTEK - 20kg bag
- NSG Sika 215 - 25kg bag



HHCS/CSA/CSC Balustrade accessories



HHCS
Hex Head Coach Screw



CSA
Chemset Anchor



CSC
Chemset Cartridge

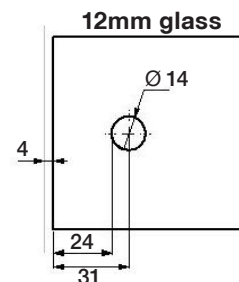
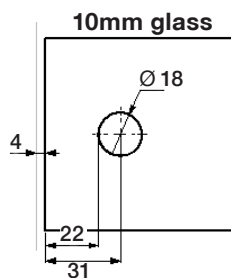
CD161 Balustrade bracket

AVAILABLE FINISHES

- Polished stainless
- Satin stainless

TECHNICAL DETAILS

Suitable for 10 and 12mm glass
316 grade stainless steel



BB70/BB70SQ Balustrade brackets, wall mount

AVAILABLE FINISHES

- Polished stainless
- Satin stainless

TECHNICAL DETAILS

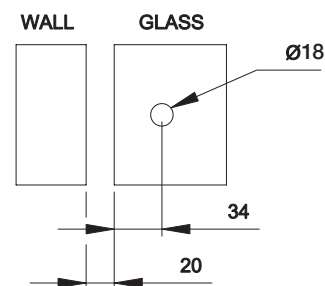
Suitable for 10 and 12mm glass
316 grade stainless steel
Round and square options



BB70



BB70SQ



BBD70/BBD70SQ Balustrade brackets, glass/glass

AVAILABLE FINISHES

- Polished stainless
- Satin stainless

TECHNICAL DETAILS

Suitable for 10 and 12mm glass
316 grade stainless steel
Round and square options



BBD70



BBD70SQ

